

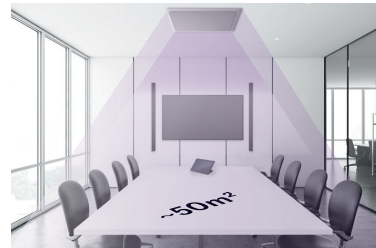


PROFESSIONAL AUDIO FOR CONFERENCING

RM-CG CEILING ARRAY MICROPHONE for ADECIA Solutions



One RM-CG covers
an area of ~ 50m²



Available only in combination with YAMAHA
SPEAKER BUNDLES for ADECIA Solutions to
get full ADECIA advantages

SPECIAL FEATURES OF THE COMPLETE ADECIA SOLUTION



For medium sized to bigger
rooms, from 5 to 50 people

HIGH SCALABILITY



Professional Audio Quality for your
Conference from Input to Output
thanks to Yamaha's Technologies

BEST AUDIO QUALITY



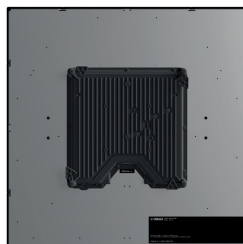
PLUG & PLAY

Easy to install and operate with a web based
User Interface – works with all conferencing
platforms



AUTO TUNE SETUP

Unique “Auto Room Tuning” sets all
parameters of the devices to get the best
acoustic settings for the room



RM-CG CEILING ARRAY MICROPHONE

- FOCUSES ON VOICES AND ELIMINATE UNWANTED SOUNDS AND NOISES
- 4 DYNAMIC AUTO TRACKING BEAMS TO CAPTURE EVERYONE IN A ROOM,
- NO BLIND SPOTS
- BUILD IN AUDIO POST PROCESSING FOR OUTSTANDING INTELLIGIBILITY
 - ACOUSTIC ECHO CANCELLATION
 - DYNAMIC VOICE TRACKING
 - AUTO GAIN CONTROL
 - NOISE REDUCTION
 - DE-REVERBERATION (REMOVING IN-ROOM ECHO)
 - AUTO MIXING OF 4 DYNAMIC BEAMS
 - UNIQUE HUMAN VOICE ACTIVITY DETECTION (HVAD)
- DANTE AUDIO, CONTROL TRANSMISSION AND POE SUPPLY THROUGH 1 LAN CABLE
- 3 MOUNTING METHODS

Important:

The RM-Series microphones can be only sold together with a Speaker Bundle for ADECIA. Only the combination delivers the outstanding performance and quality of the ADECIA solution. In addition a Level 2 PoE Switch is needed as the main components are powered over Ethernet!

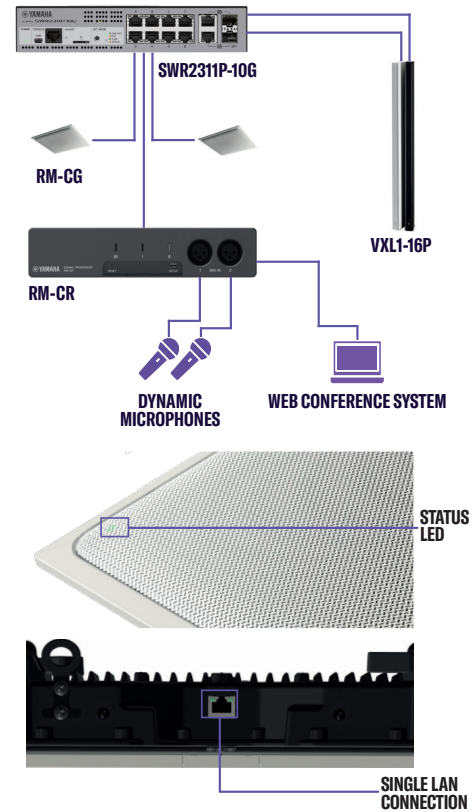


PROFESSIONAL AUDIO FOR CONFERENCING

SPECIFICATIONS

RM-CG CEILING ARRAY MICROPHONE			
General	Dimensions	560 (W) x 90 (H) x 560 (D) mm (including protrusion/microphone panel: 22mm)	
	Weight	5.6kg	
	Power Requirements	PoE (IEEE 802.3af)	
	Maximum Power Consumption	7.2W	
	Connector	RJ-45	
	In Operation	Temperature	0°C - 40°C
		Humidity	30% - 90% (no condensation)
	Storage	Temperature	-20°C - 60°C
		Humidity	20% - 90% (no condensation)
	Indicators	Front indicator (Mute/Unmute & Status), Network port indicator	
	Mount	Ceiling mount, Wire mount, VESA mount	
	Maximum Device Number with RM-CR	4	
	Accessories (* Including a spare respectively)	Construction description, (Guarantee), Grille x 1, Screws for grille (M3 x 8mm) x 5*, Screw cover x 4, Cutting template x 1, C ring x 1, Screws for C ring x 2, Hanger angle x 1, Screws for hanger angle (M4 x 20mm) x 5*, Terminal cover x 1, Safety wire x 1, Binding band x 1, Clamp plate x 2	
Dust Protection	IP5X for dust protection (with terminal cover)		
Plenum Rating	UL2043 (with terminal cover)		
Network	Ethernet	Dante, Remote Control, Web UI, PoE	
	Cable Requirements	CAT5e or higher (STP)	
	Audio I/O	Dante 1in/2out	
Audio	Sampling Rate	48kHz	
	Bit Depth	24bit	
	Latency	58ms (including signal processing)	
	Frequency Response	160Hz - 16kHz (-10dB)	
	Maximum Input Level of SPL (0dBFS)	117.8dB SPL	
	Self Noise	-0.8dBA SPL	
	SN Ratio (Ref. 94dB SPL at 1kHz)	94.8dBA	
	Sensitivity	-23.8dBFS/Pa	
	Dynamic Range	118.6dBA	
Signal Processing	Multi-beam Tracking, Adaptive Echo Canceller, Noise Reduction, Dereverberation, Auto Mixer, Auto Gain Control, Parametric EQ, Output Gain		

INSTALLATION EXAMPLE - CEILING SOLUTION

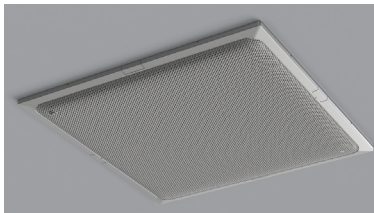


COMPONENTS

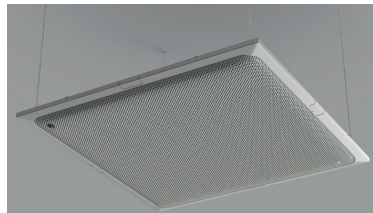
- RM-CR
- SWR2311P-10G
- RM-CG
- VX1-16P

MOUNTING METHODS

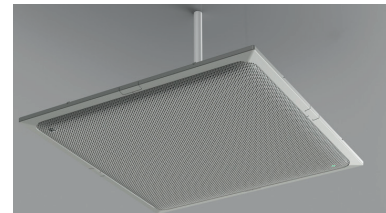
FLUSH MOUNT



WIRE HANGING



VESA



Bundle Set Nr.	Product Name	Description
CRMCGW	RM-CG (white)	YAMAHA Ceiling array Microphone RM-CG, white
CRMCGB	RM-CG (black)	YAMAHA Ceiling array Microphone RM-CG, black